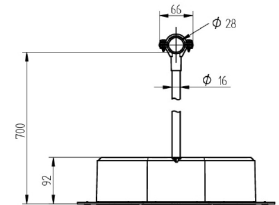




# ELIT

## Down conductor base concrete h=700 mm



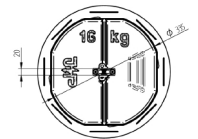
Roof conductor holder h=700mm in frost-proof concrete for HVC-85 conductor

### Technical description

HVC-85 conductor support (complete set) to increase the height of the HVC conductor, with concrete foundation (Ø335mm), support plate and conductor fasteners.  
 Conductor holder, rod: Ø 16 mm, glass fiber reinforced plastic (GRP)  
 Height of conductor holder: 700 mm  
 Material of conductor fastener: plastic PA 6, black  
 Diameter, conductor fastener/clamp: Ø 28 mm  
 Concrete base: Ø 335 mm, 16.4 kg, frost-resistant concrete (C45/55)  
 Material of support plate: PE-EVA, black  
 Suitable for all conventional synthetic roof membranes

### Advantages:

Complete set with concrete foundation, support plate and conductor holder  
 Conductor holder, rod: Ø 16 mm, glass fibre reinforced plastic (GRP)  
 Frost-proof concrete foundation, and weatherproof plastic holder  
 Suitable for all conventional synthetic roof membranes



Product name/ Art.nr/ GTIN	
Product name/ Art.nr/ GTIN	ELIT NL-BASE-700MM-HVC-85/ 40170066/ 7070810024254
According to:	EN 62561-4
Mounting type conductor	With grip clamp
Conductor diameter	28 - 28 Millimetre
Application	Flat roof
Mounting method	Other
Chuckling range	335 - 335 Millimetre
Material of holder	Plastic
Material of carrier	Concrete
Length carrier	335 Millimetre
Assembly height conductor holder	700 Millimetre